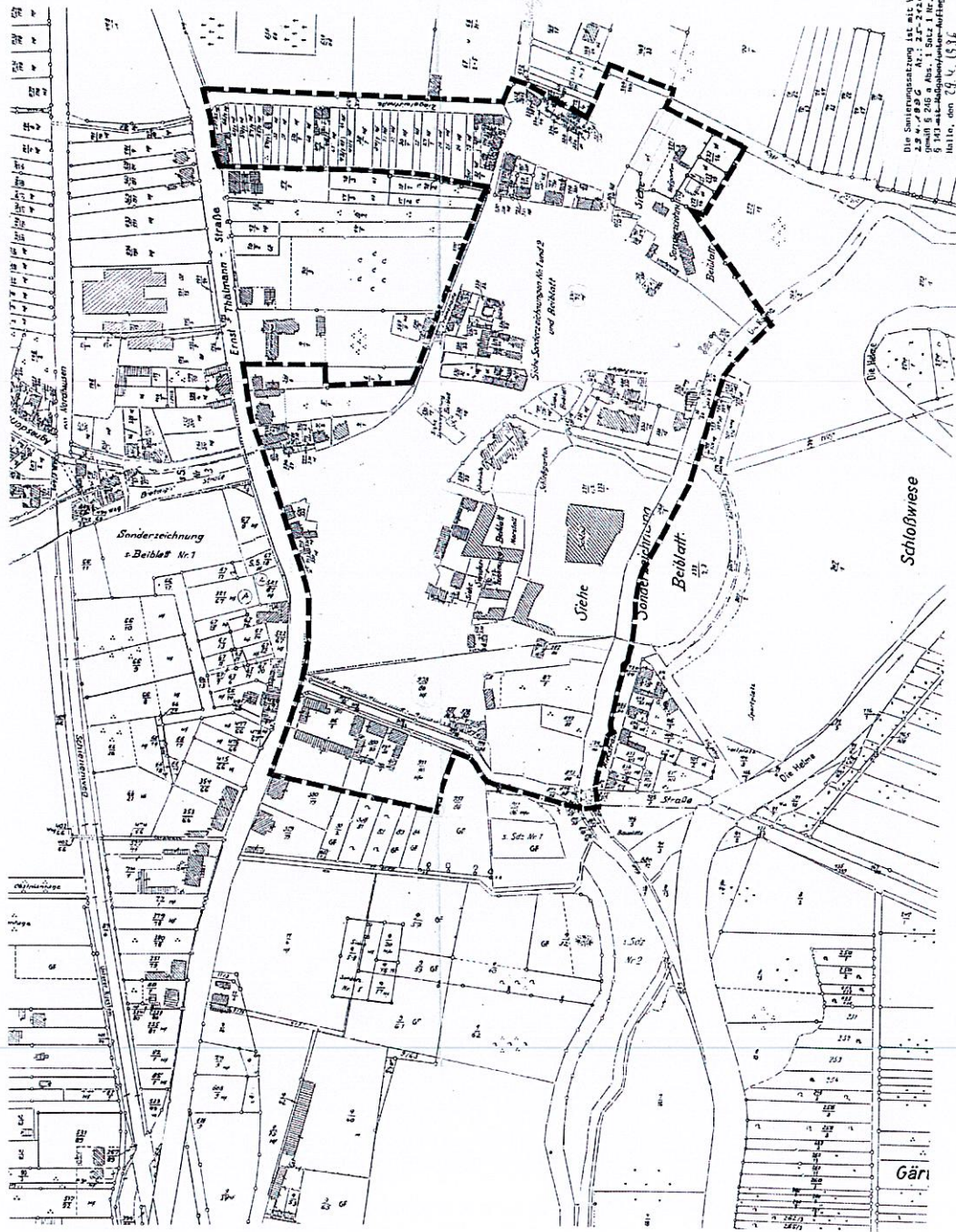




SANIERUNG IM LÄNDLICHEN RAUM GRENZEN DES FÖRMLICH FESTGELEGTEN SANIERUNGSGEBIETES

Die Sanierungszone umfaßt alle im folgenden benannten Flurstücke sowie die von diesen Flurstücken eingeschlossenen Bereiche

| Flur 4 | Flurstück | Flurstück | Flurstück | Flurstück | Flurstück | Flurstück |
|--------|-----------|-----------|-----------|-----------|-----------|-----------|
| 101 | 517/20 | 76/20 | 517/20 | 101 | 517/20 | 101 |
| 41 | 517/21 | 76/21 | 517/21 | 41 | 517/21 | 41 |
| 50 | 517/22 | 76/22 | 517/22 | 50 | 517/22 | 50 |
| 60 | 517/23 | 76/23 | 517/23 | 60 | 517/23 | 60 |
| 70 | 517/24 | 76/24 | 517/24 | 70 | 517/24 | 70 |
| 80 | 517/25 | 76/25 | 517/25 | 80 | 517/25 | 80 |
| 90 | 517/26 | 76/26 | 517/26 | 90 | 517/26 | 90 |
| 100 | 517/27 | 76/27 | 517/27 | 100 | 517/27 | 100 |
| 110 | 517/28 | 76/28 | 517/28 | 110 | 517/28 | 110 |
| 120 | 517/29 | 76/29 | 517/29 | 120 | 517/29 | 120 |
| 130 | 517/30 | 76/30 | 517/30 | 130 | 517/30 | 130 |
| 140 | 517/31 | 76/31 | 517/31 | 140 | 517/31 | 140 |
| 150 | 517/32 | 76/32 | 517/32 | 150 | 517/32 | 150 |
| 160 | 517/33 | 76/33 | 517/33 | 160 | 517/33 | 160 |
| 170 | 517/34 | 76/34 | 517/34 | 170 | 517/34 | 170 |
| 180 | 517/35 | 76/35 | 517/35 | 180 | 517/35 | 180 |
| 190 | 517/36 | 76/36 | 517/36 | 190 | 517/36 | 190 |
| 200 | 517/37 | 76/37 | 517/37 | 200 | 517/37 | 200 |
| 210 | 517/38 | 76/38 | 517/38 | 210 | 517/38 | 210 |
| 220 | 517/39 | 76/39 | 517/39 | 220 | 517/39 | 220 |
| 230 | 517/40 | 76/40 | 517/40 | 230 | 517/40 | 230 |
| 240 | 517/41 | 76/41 | 517/41 | 240 | 517/41 | 240 |
| 250 | 517/42 | 76/42 | 517/42 | 250 | 517/42 | 250 |
| 260 | 517/43 | 76/43 | 517/43 | 260 | 517/43 | 260 |
| 270 | 517/44 | 76/44 | 517/44 | 270 | 517/44 | 270 |
| 280 | 517/45 | 76/45 | 517/45 | 280 | 517/45 | 280 |
| 290 | 517/46 | 76/46 | 517/46 | 290 | 517/46 | 290 |
| 300 | 517/47 | 76/47 | 517/47 | 300 | 517/47 | 300 |
| 310 | 517/48 | 76/48 | 517/48 | 310 | 517/48 | 310 |
| 320 | 517/49 | 76/49 | 517/49 | 320 | 517/49 | 320 |
| 330 | 517/50 | 76/50 | 517/50 | 330 | 517/50 | 330 |
| 340 | 517/51 | 76/51 | 517/51 | 340 | 517/51 | 340 |
| 350 | 517/52 | 76/52 | 517/52 | 350 | 517/52 | 350 |
| 360 | 517/53 | 76/53 | 517/53 | 360 | 517/53 | 360 |
| 370 | 517/54 | 76/54 | 517/54 | 370 | 517/54 | 370 |
| 380 | 517/55 | 76/55 | 517/55 | 380 | 517/55 | 380 |
| 390 | 517/56 | 76/56 | 517/56 | 390 | 517/56 | 390 |
| 400 | 517/57 | 76/57 | 517/57 | 400 | 517/57 | 400 |
| 410 | 517/58 | 76/58 | 517/58 | 410 | 517/58 | 410 |
| 420 | 517/59 | 76/59 | 517/59 | 420 | 517/59 | 420 |
| 430 | 517/60 | 76/60 | 517/60 | 430 | 517/60 | 430 |
| 440 | 517/61 | 76/61 | 517/61 | 440 | 517/61 | 440 |
| 450 | 517/62 | 76/62 | 517/62 | 450 | 517/62 | 450 |
| 460 | 517/63 | 76/63 | 517/63 | 460 | 517/63 | 460 |
| 470 | 517/64 | 76/64 | 517/64 | 470 | 517/64 | 470 |
| 480 | 517/65 | 76/65 | 517/65 | 480 | 517/65 | 480 |
| 490 | 517/66 | 76/66 | 517/66 | 490 | 517/66 | 490 |
| 500 | 517/67 | 76/67 | 517/67 | 500 | 517/67 | 500 |
| 510 | 517/68 | 76/68 | 517/68 | 510 | 517/68 | 510 |
| 520 | 517/69 | 76/69 | 517/69 | 520 | 517/69 | 520 |
| 530 | 517/70 | 76/70 | 517/70 | 530 | 517/70 | 530 |
| 540 | 517/71 | 76/71 | 517/71 | 540 | 517/71 | 540 |
| 550 | 517/72 | 76/72 | 517/72 | 550 | 517/72 | 550 |
| 560 | 517/73 | 76/73 | 517/73 | 560 | 517/73 | 560 |
| 570 | 517/74 | 76/74 | 517/74 | 570 | 517/74 | 570 |
| 580 | 517/75 | 76/75 | 517/75 | 580 | 517/75 | 580 |
| 590 | 517/76 | 76/76 | 517/76 | 590 | 517/76 | 590 |
| 600 | 517/77 | 76/77 | 517/77 | 600 | 517/77 | 600 |
| 610 | 517/78 | 76/78 | 517/78 | 610 | 517/78 | 610 |
| 620 | 517/79 | 76/79 | 517/79 | 620 | 517/79 | 620 |
| 630 | 517/80 | 76/80 | 517/80 | 630 | 517/80 | 630 |
| 640 | 517/81 | 76/81 | 517/81 | 640 | 517/81 | 640 |
| 650 | 517/82 | 76/82 | 517/82 | 650 | 517/82 | 650 |
| 660 | 517/83 | 76/83 | 517/83 | 660 | 517/83 | 660 |
| 670 | 517/84 | 76/84 | 517/84 | 670 | 517/84 | 670 |
| 680 | 517/85 | 76/85 | 517/85 | 680 | 517/85 | 680 |
| 690 | 517/86 | 76/86 | 517/86 | 690 | 517/86 | 690 |
| 700 | 517/87 | 76/87 | 517/87 | 700 | 517/87 | 700 |
| 710 | 517/88 | 76/88 | 517/88 | 710 | 517/88 | 710 |
| 720 | 517/89 | 76/89 | 517/89 | 720 | 517/89 | 720 |
| 730 | 517/90 | 76/90 | 517/90 | 730 | 517/90 | 730 |
| 740 | 517/91 | 76/91 | 517/91 | 740 | 517/91 | 740 |
| 750 | 517/92 | 76/92 | 517/92 | 750 | 517/92 | 750 |
| 760 | 517/93 | 76/93 | 517/93 | 760 | 517/93 | 760 |
| 770 | 517/94 | 76/94 | 517/94 | 770 | 517/94 | 770 |
| 780 | 517/95 | 76/95 | 517/95 | 780 | 517/95 | 780 |
| 790 | 517/96 | 76/96 | 517/96 | 790 | 517/96 | 790 |
| 800 | 517/97 | 76/97 | 517/97 | 800 | 517/97 | 800 |
| 810 | 517/98 | 76/98 | 517/98 | 810 | 517/98 | 810 |
| 820 | 517/99 | 76/99 | 517/99 | 820 | 517/99 | 820 |
| 830 | 517/100 | 76/100 | 517/100 | 830 | 517/100 | 830 |

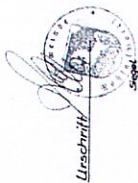
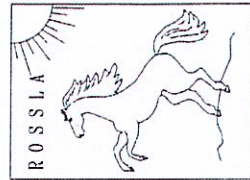


STADTBÄULICHE SANIERUNG
IM LÄNDLICHEN BEREICH
ROSSLA - ORTSKERN
FÖRMLICH FESTGELEGTES
SANIERUNGSGEBIET

Blatt - Nr. 1b

PLANUNGSGEMEINSCHAFT

KORBER & KAUTZ



* Amtliche Kopie
Kopie des Katasterplans vom 18.05.94

Die Sanierungsplanung ist mit Verfügung vom
22.04.1996 Nr. 22-2204/96 des
5. Stadtrat der Stadt Rossla
Halle, dem 24.4.1996
Genehmigung erteilt.
Auftraggeber
Korber & Kautz



Korber & Kautz



M 1 : 2000

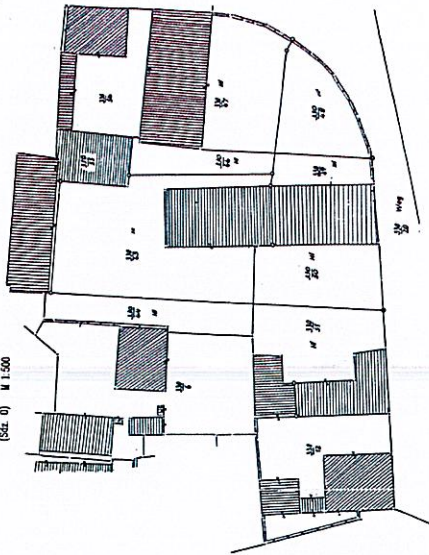
VEREINFACHUNGSLAUBNIS ERHEBEN DURCH KÜSTENAMT!

Quelle: Legendeinheiten der Gemündung Billa
- Kreis Sanierungsgebiet
Flur - Nr. 3, 4, 5, 6 - einschließlich der
zugehörigen Bebauung
Brennplan, Katasterplan Sanierungsgebiet

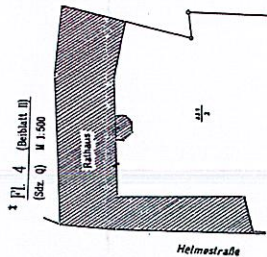
STAND : AUGUST 1994

SANIERUNG IM LÄNDLICHEN RAUM GRENZEN DES FÖRMILICH FESTGELEGTEN SANIERUNGSGEBIETES

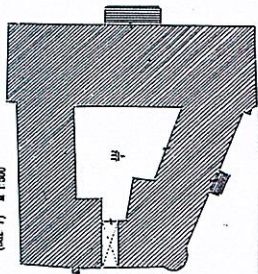
† Fl. 4 (Beibalt. II)
(Satz. 0) M 1.500



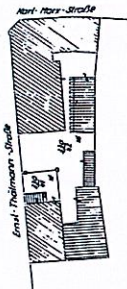
† Fl. 4 (Beibalt. II)
(Satz. 0) M 1.500



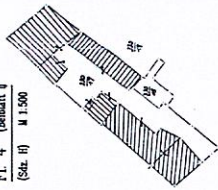
† Fl. 4 (Beibalt. II)
(Satz. 7) M 1.500



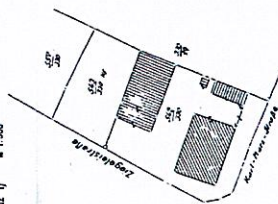
† Fl. 4 (Beibalt. I)
(Satz. C) M 1.500



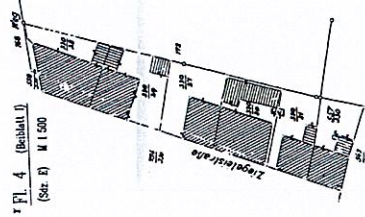
† Fl. 4 (Beibalt. I)
(Satz. I) M 1.500



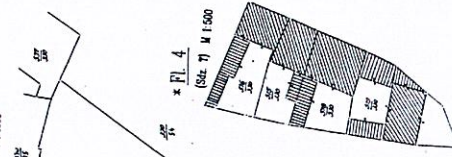
† Fl. 4 (Beibalt. I)
(Satz. I) M 1.500



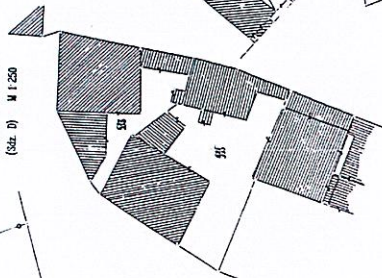
† Fl. 4 (Beibalt. I)
(Satz. F) M 1.500



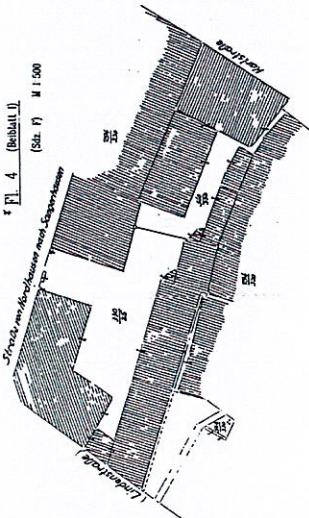
† Fl. 4 (Beibalt. I)
(Satz. I) M 1.000



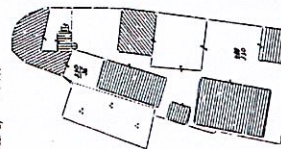
† Fl. 4 (Beibalt. I)
(Satz. D) M 1.200



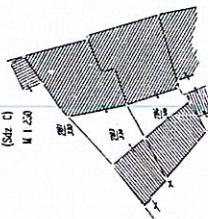
† Fl. 4 (Beibalt. I)
(Satz. A) M 1.500



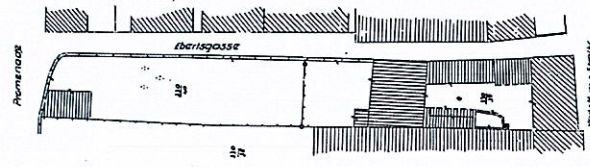
† Fl. 4 (Beibalt. I)
(Satz. B) M 1.500



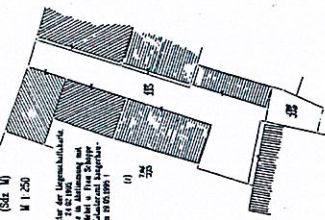
† Fl. 4 (Beibalt. I)
(Satz. C) M 1.200



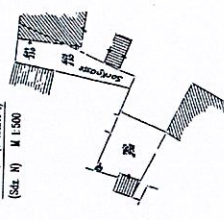
† Fl. 4 (Beibalt. I)
(Satz. I) M 1.500



† Fl. 4 (Beibalt. I)
(Satz. II) M 1.200



† Fl. 4 (Beibalt. I)
(Satz. III) M 1.500

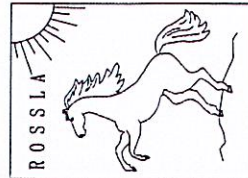


Quelle: Lagepläne der Gemarkung Bolla
- Kreis Sangerhausen -
Flur-Nr. 3, 4, 6, 8 - einschließlich der
zugehörigen Baulöcher
herausgegeben Kastenplan Sangerhausen

VERZEICHNISLAUBNIS ERTEILT DURCH KRASTRAUT!

Urschrift
angeh.

* Flur- und Beibalt.-Nr. entsprechen der Quelle!
Sonderzeichenges. 'Satz' - Nummerierung durch
Planungsphase vorgenommen



STADTEBAULICHE SANIERUNG
IM LÄNDLICHEN BEREICH
ROSSLA - ORTSKERN
FÖRMILICH FESTGELEGTES
SANIERUNGSGEBIET

Blatt - Nr. 1a

PLANUNGSGEMEINSCHAFT
KORBER & KAUTZ

STAND : AUGUST 1994